

First Sonnet

There is a world of beauty in the face of the woman who
isly appreciates the art of the light and the shadow.



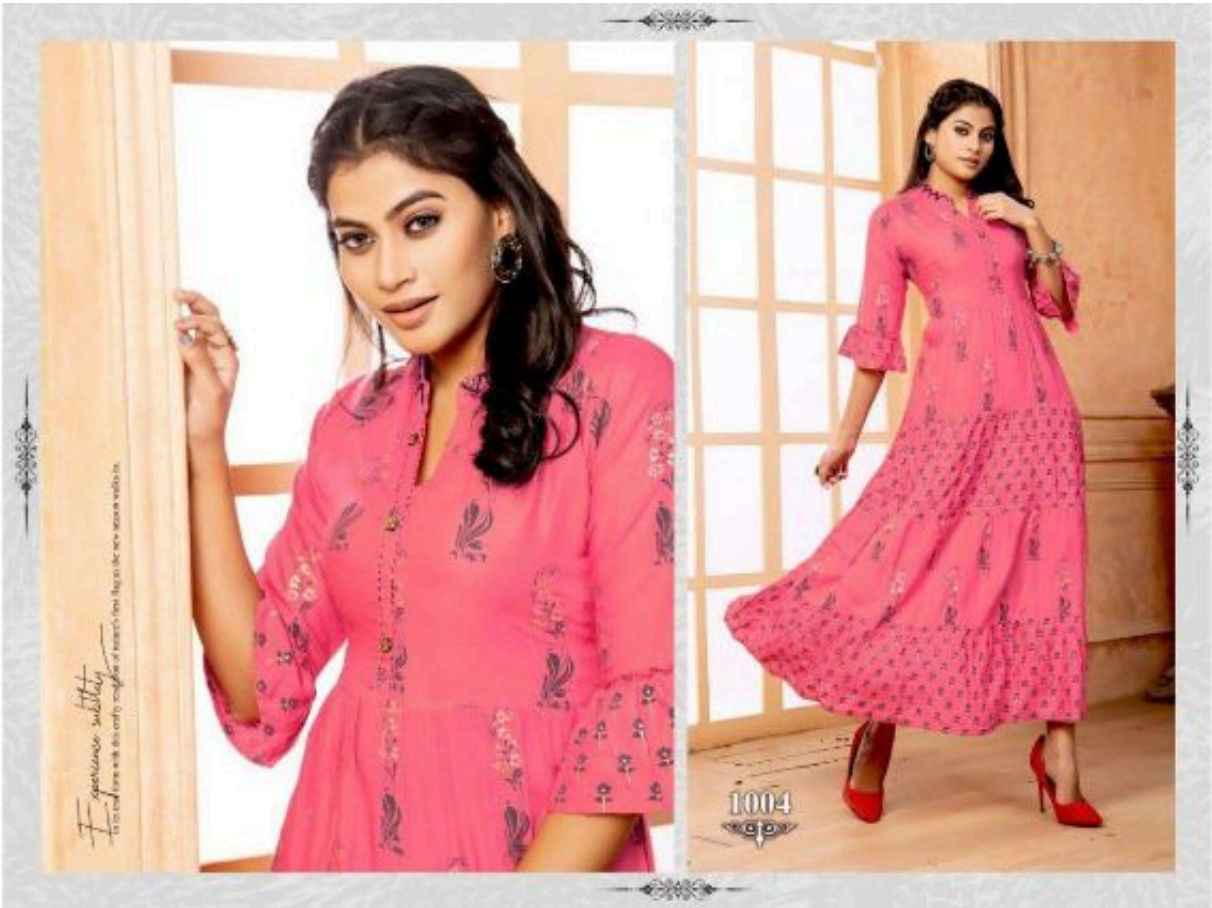
1001









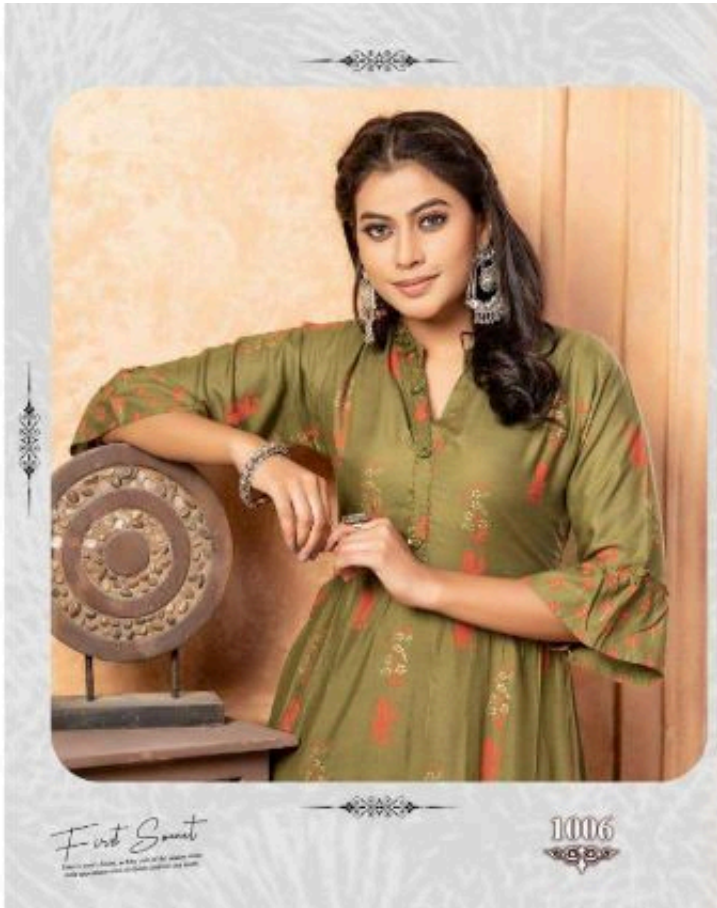




Like honey



1003





The liveliness
of brass is always noticeable.
A subtle detail designed to bring
the room together and make it feel
just perfect for your wedding ceremony.





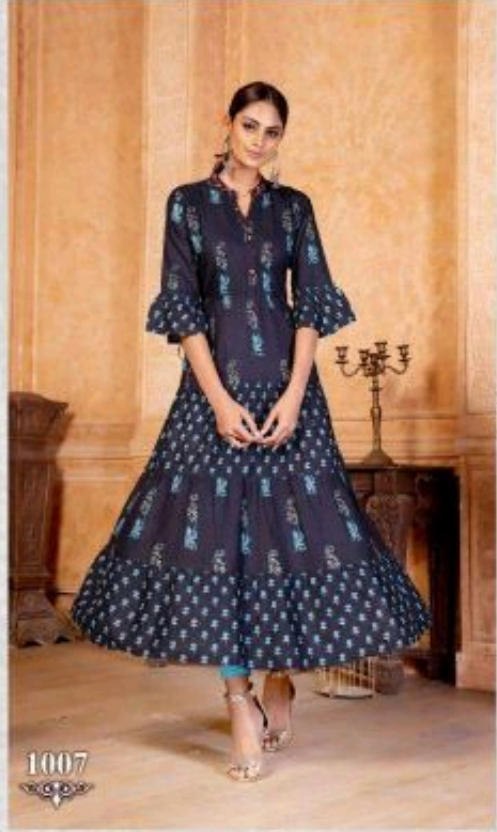
1008



Like honey
Be sweet to your skin, soft to the touch,
and a little sticky on the lips.
You'll love it on your skin.

Intricate Patterns

Bring out your inner diva with this chic and ethnic collection of dresses based on highly elaborate embroidery



1007