



5005 A

## Classic appeal



Yes, elegance and style is always an integrated part of village attire, and when you adopt such style, you feel a sense of elegancy and spirit of look.





# Nayantara



ART  
RIDDH'S  
New Style

5005 D



ART  
RIDDH'S

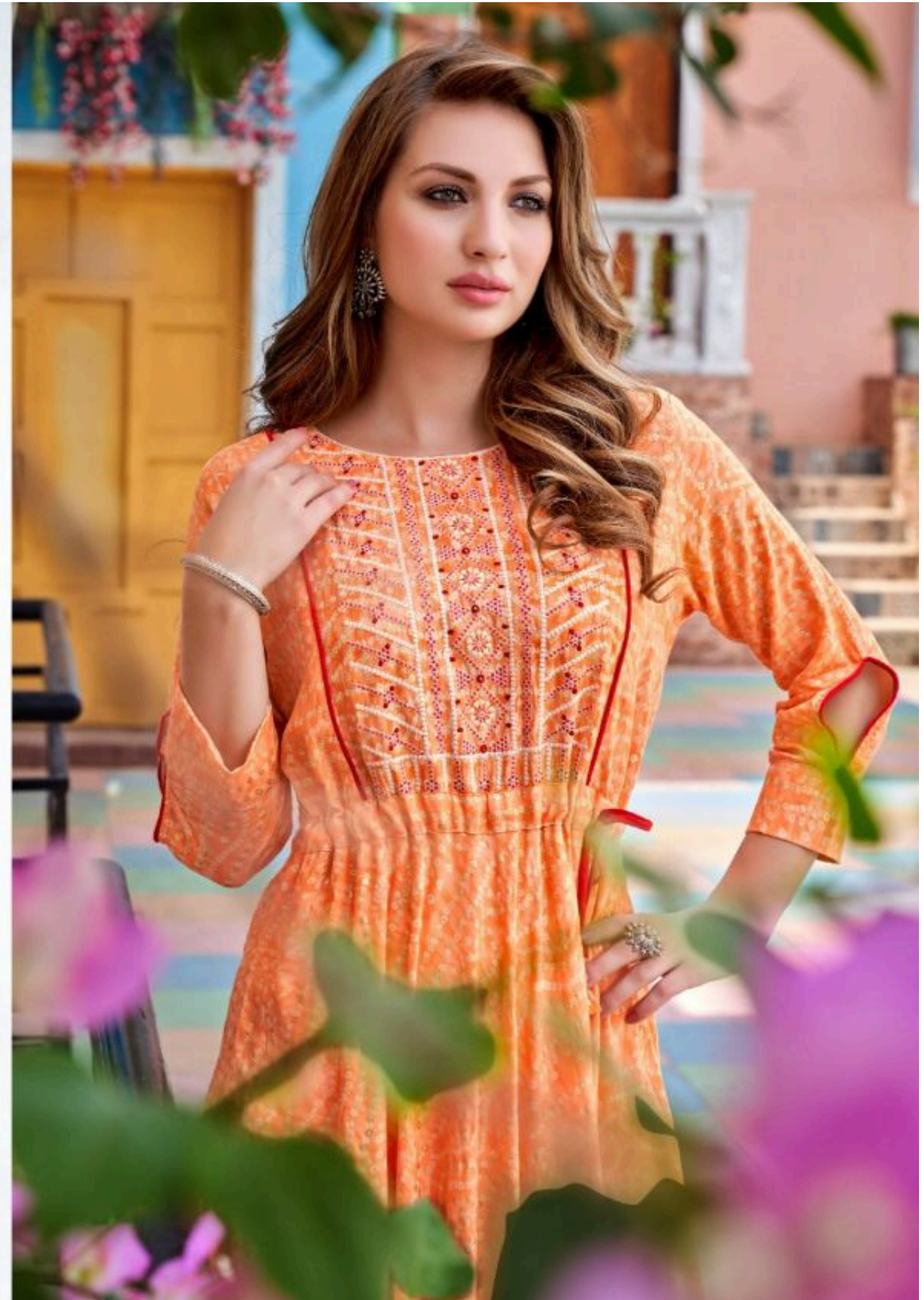
5005 B



5005 C



5005 D







ART  
RIDDH'S  
BANGALORE



5005 C





5005 A



5005 B