

**KS4U**<sup>TM</sup>  
FASHION WEAR OF INDIA.

**Komal**  
SIZE : L-XL-2XL-3XL.

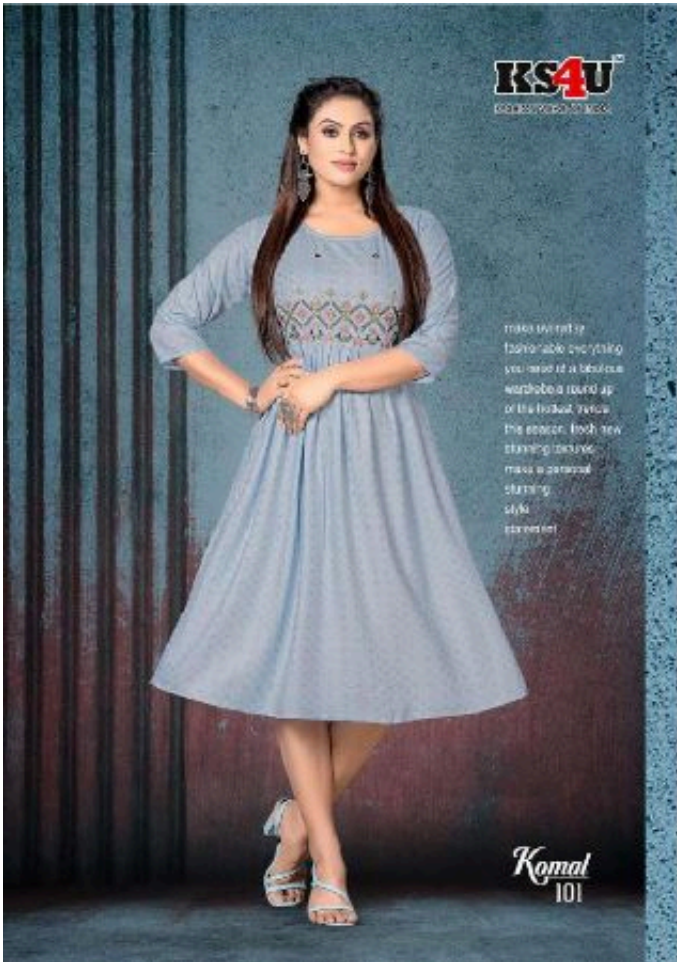


**KS4U**<sup>TM</sup>  
FASHION WEAR OF INDIA

**Komal**  
SIZE : L-XL-2XL-3XL









*"Think for three weeks goodbye to a dress - how good it looks,  
first, style and it's not any day's competition."*

This festive season, be all about our special festive gowns. Rich colors, blends with  
beautifully crafted fabric. This collection harmonizes tradition and modern beauty.

**BOLD STATEMENT**

**KS4U**  
DESIGNER WEAR



*Komal*  
102

*There are certain styles of women apparel  
that are more popular than the others.*

follow  
the trend





**KS4U**  
KASHI SAREES & STYLING

*the height of feminine fashion excellence elegant stylish & graceful and  
exceptionally classy an irresistible beauty certainly stands  
as an inspiration for captivants*



*Komal*  
103

expediting  
**variant**

*inspiration the beauty of the Indian women  
generally derived in elegance from the traditional  
refined the it essential part of the sciences  
through culture and*



*"I envy women who effortlessly glide in heels, but in my experience, it's always been a choice between elegance and comfort."*

**KS4U**  
KOLKATA SOUTH CITY



*Komal*  
104

look gorgeous everyday



**KS4U**  
KASHI KURTAS

peer with a light awareness of international luxury fashion and beauty trends, the fashion woman in INDIA is unique with her privileged counterparts around the world.

*Komal*  
105

**DIVINE DIVA**

*It's written in time beauty is beyond every worldly desire. It is simple. It is pure. It is the karma that every woman is surrounded by and this collection of western is a reflection of the charming love every woman has.*