



**Shree**  
160264

TOP:- ORGANZA SILK  
WITH EMBROIDERY  
DUPATTA:- ORGANZA SILK  
WITH EMBROIDERY  
BOTTOM / INNER:- DULLI SANTOON



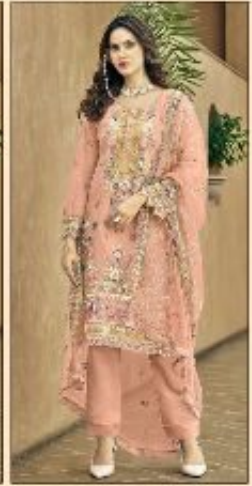
**S-942**



**S-942-B**



**S-942-C**



**S-942-D**



**Shree**  
160264

TOP:- ORGANZA SILK  
WITH EMBROIDERY  
DUPATTA:- ORGANZA SILK  
WITH EMBROIDERY  
BOTTOM / INNER:- DULL SANTOON



**S-942**



**S-942-B**



**S-942-C**



**S-942-D**

TOP:- ORGANZA SILK  
WITH EMBROIDERY  
DUPATTA:- ORGANZA SILK  
WITH EMBROIDERY  
BOTTOM / INNER:- DULL SANTOON



S-942-C 160264

TOP:- ORGANZA SILK  
WITH EMBROIDERY  
DUPATTA:- ORGANZA SILK  
WITH EMBROIDERY  
BOTTOM / INNER:- DULL SANTOON



S-942-D

160264

TOP:- ORGANZA SILK  
WITH EMBROIDERY  
DUPATTA:- ORGANZA SILK  
WITH EMBROIDERY  
BOTTOM / INNER:- DULL SANTOON



S-942-B

160264



Shree<sup>®</sup>  
FABRS

30%  
100% POLYESTER  
100% POLYESTER  
100% POLYESTER  
100% POLYESTER  
5,942.00

160264

Shree<sup>®</sup>  
FABRS

TOP:- ORGANZA SILK  
WITH EMBROIDERY  
DUPATTA:- ORGANZA SILK  
WITH EMBROIDERY  
BOTTOM / INNER:- DULL SANTOON



S-942

160264



Shree<sup>®</sup>

Shree

Shree

S-1602-0  
S-1602-1

160264





Shree R  
FABRICATION

100% COTTON  
WITH EMBROIDERY  
CURTAIN  
WITH DRESSING SET  
SHRIMP  
S-942

160264

Shree  
FABRICATION



160264

Shree



160264