



D.No 239 A



D.No 239-B



D.No 239-C

178197



D.No | 239 A

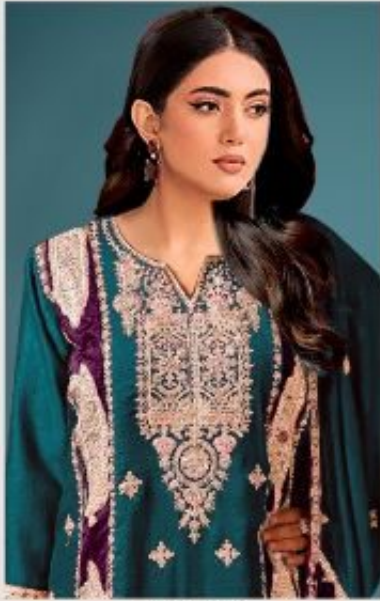


D.No | 239-B



D.No | 239-C

178197



D.NO.239 B

**TOP** - CHINON SILK EMBROIDERED  
WITH JARKAN WORK

**DUPATTA** - CHINON EMBROIDERED

**BOTTOM** - HEAVY DULL SANTOON  
**INNER** - HEAVY DULL SANTOON

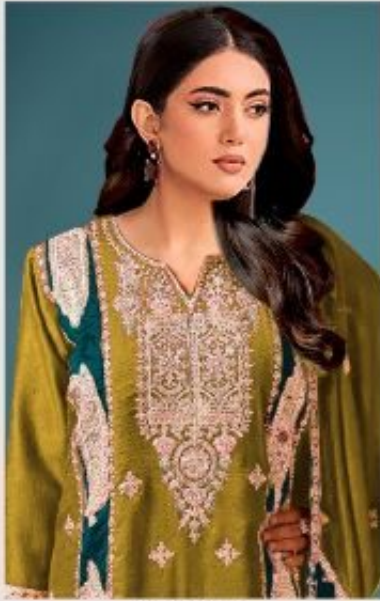


CARE INSTRUCTIONS

- DO NOT BLEACH
- DO NOT USE IRON
- DO NOT USE DRY CLEANING
- DO NOT USE STARCH
- DO NOT USE BLEACH
- DO NOT USE DRY CLEANING
- DO NOT USE STARCH
- DO NOT USE BLEACH



178197



D.NO.239 C

**TOP** - CHINON SILK EMBROIDERED  
WITH JARKAN WORK

**DUPATTA** - CHINON EMBROIDERED

**BOTTOM** - HEAVY DULL SANTOON  
**INNER** - HEAVY DULL SANTOON

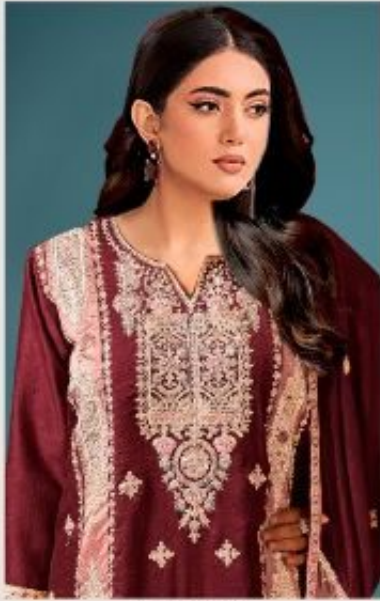


CARE INSTRUCTIONS

- DO NOT BLEACH
- DO NOT USE IRON
- DO NOT USE DRY CLEANING
- DO NOT USE STARCH
- DO NOT USE SOAP
- DO NOT USE HOT WATER
- DO NOT USE HIGH TEMPERATURE



178197



D.NO.239 A

**TOP** - CHINON SILK EMBROIDERED  
WITH JARKAN WORK

**DUPATTA** - CHINON EMBROIDERED

**BOTTOM** - HEAVY DULL SANTOON  
**INNER** - HEAVY DULL SANTOON



CARE INSTRUCTIONS

- DO NOT BLEACH
- DO NOT USE IRON
- DO NOT USE DRY CLEANING
- DO NOT USE STARCH
- DO NOT USE BLEACH
- DO NOT USE DRY CLEANING
- DO NOT USE STARCH
- DO NOT USE BLEACH



178197