



VELVET COLLECTION



D.NO.230 A

TOP--Velvet With Heavy Work

BOTTOM- RAYON PASHMINA

DUPATTA-HEAVY CHINON WITH EMBROIDERY

CARE INTRUCTIONS

- DRY CLEAN RECOMMENDED
- DO NOT OVEREXPOSE FABRIC TO STRONG SUNLIGHT
- DO NOT USE ANY TYPE OF BLEACH OR STAIN REMOVING CHEMICALS
- WASH AT MODERATE TEMPERATURE



178204



VELVET COLLECTION



D.NO.230 B

TOP--Velvet With Heavy Work

BOTTOM- RAYON PASHMINA

DUPATTA-HEAVY CHINON WITH EMBROIDERY

CARE INTRUCTIONS

- DRY CLEAN RECOMMENDED
- DO NOT OVEREXPOSE FABRIC TO STRONG SUNLIGHT
- DO NOT USE ANY TYPE OF BLEACH OR STAIN REMOVING CHEMICALS
- IRON AT MODERATE TEMPERATURE



178204



VELVET COLLECTION



D.NO.230 C

TOP--Velvet With Heavy Work

BOTTOM- RAYON PASHMINA

DUPATTA-HEAVY CHINON WITH EMBROIDERY

CARE INTRUCTIONS

- DRY CLEAN RECOMMENDED
- DO NOT OVEREXPOSE DAWN FABRIC TO STRONG SUNLIGHT
- DO NOT USE ANY TYPE OF BLEACH OR STAIN REMOVING CHEMICALS
- IRON AT MODERATE TEMPERATURE



178204



VELVET COLLECTION



D.NO.230 D

TOP--Velvet With Heavy Work

BOTTOM- RAYON PASHMINA

DUPATTA-HEAVY CHINON WITH EMBROIDERY

CARE INTRUCTIONS

- DRY CLEAN RECOMMENDED
- DO NOT OVEREXPOSE GARMENT FABRIC TO STRONG SUNLIGHT
- DO NOT USE ANY TYPE OF BLEACH OR STAIN REMOVING CHEMICALS
- WASH AT MODERATE TEMPERATURE



178204



VELVET COLLECTION



D.NO.230 E

TOP--Velvet With Heavy Work

BOTTOM- RAYON PASHMINA

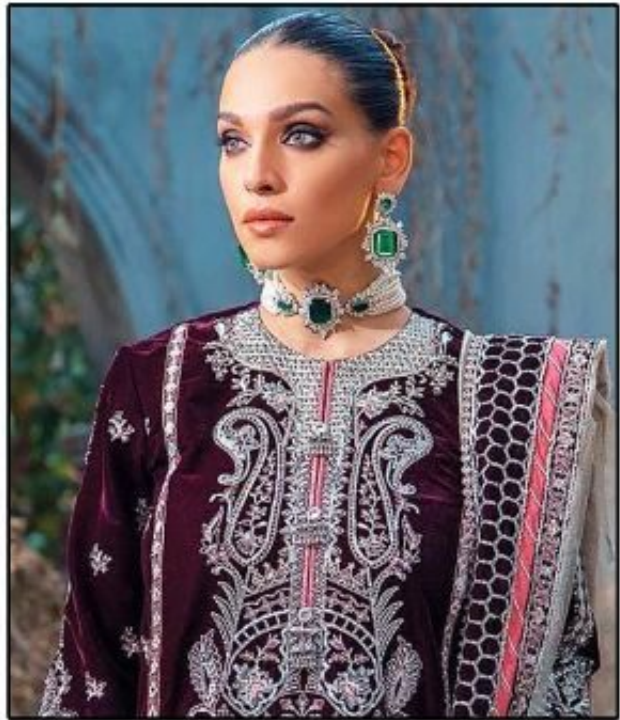
DUPATTA-HEAVY CHINON WITH EMBROIDERY

CARE INTRUCTIONS

- DRY CLEAN RECOMMENDED
- DO NOT OVEREXPOSE FABRIC TO STRONG SUNLIGHT
- DO NOT USE ANY TYPE OF BLEACH OR STAIN REMOVING CHEMICALS
- IRON AT MODERATE TEMPERATURE



178204



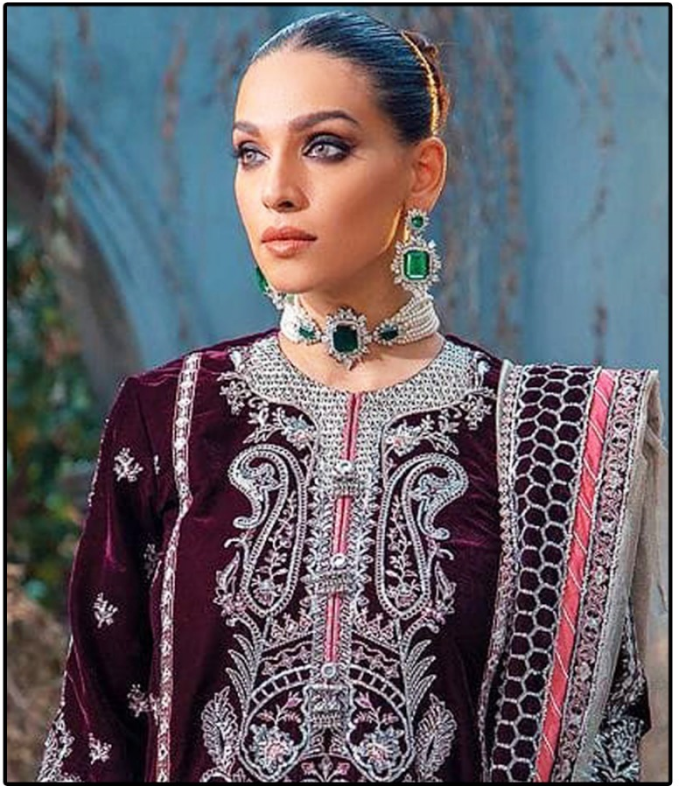
DS-144

**VELVET
COLLECTION**

NOTE:
 READ THE CARE INSTRUCTIONS
 FOR PROPER AND BEST CARE AND FOR
 DURABLE PERFORMANCE
 DO NOT WASH IN HOT WATER
 DO NOT BLEACH OR DRY CLEAN
 MAKE SURE TO USE PROPER
 DETERGENT



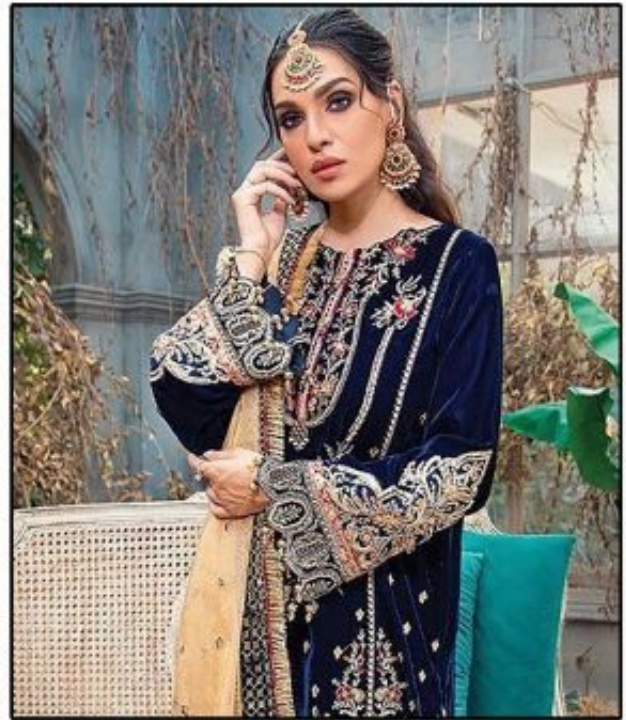
178204



DS-144

VELVET COLLECTION

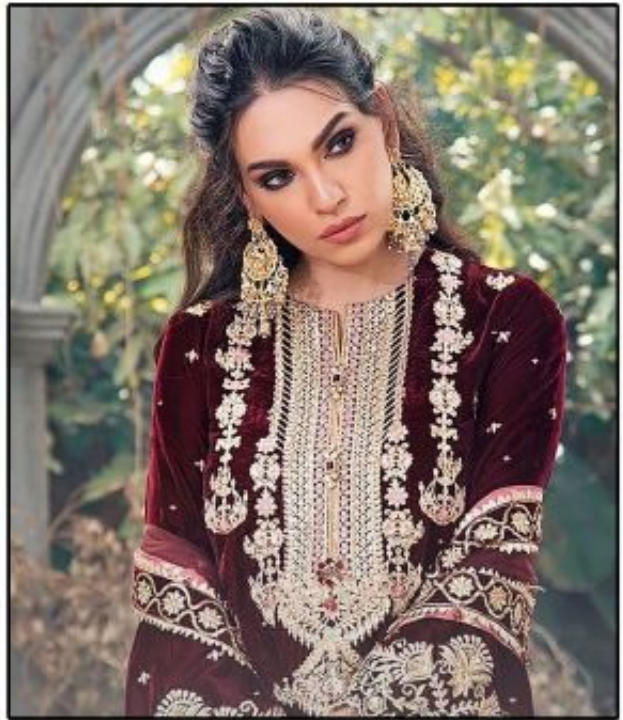
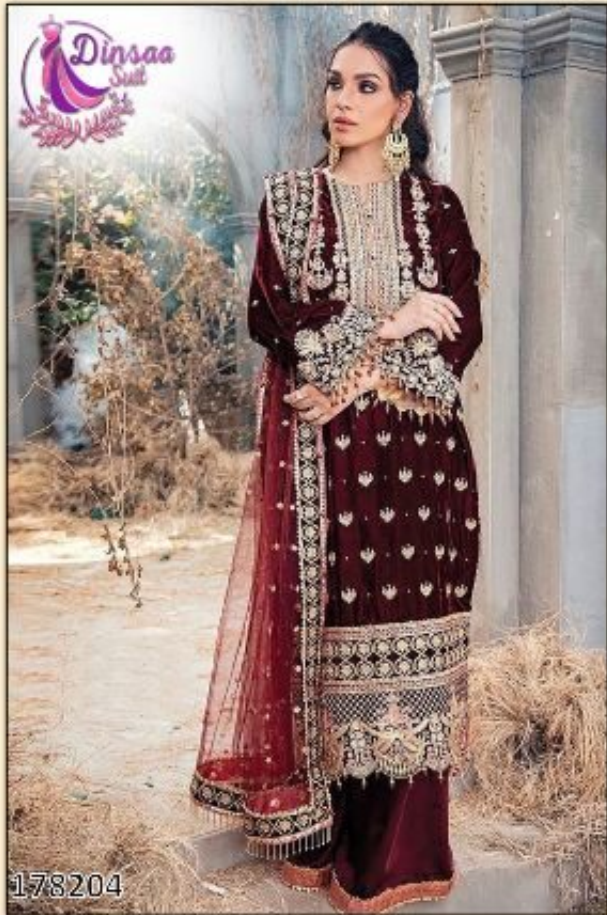
WASHING INSTRUCTIONS
DO NOT USE ANY TYPE OF BLEACH OR STAIN REMOVING CHEMICALS
REFRIGERATE CUTTING OR FABRIC SHOULD BE SOAKED IN WATER
ALL COMPONENTS SEPARATELY FOR 30 MINUTES
DO NOT KEEP HET FABRIC IN FRYERS FROM IN ORDER TO AVOID COUP MARKS
WASH COLOURED AND WHITE FABRICS SEPARATELY
IRON COLORED FABRICS AT 110°C AND WHITE FABRICS AT 150°C
EXTRA LACES, HANGINGS AND ACCESSORIES ARE NOT INCLUDED



DS-146

**VELVET
COLLECTION**

NOTE:
 READ THE CARE INSTRUCTIONS
 FOR PROPER AND LONG WEAR
 DRESSING INSTRUCTIONS
 FOR PROPER AND LONG WEAR
 DRESSING INSTRUCTIONS



DS-145

VELVET COLLECTION

DISCLAIMER
KINDLY DO NOT USE FOR COMMERCIAL
PURPOSES. ALL RIGHTS RESERVED FOR
DINSAA SUIT. ALL RIGHTS RESERVED FOR
DINSAA SUIT. ALL RIGHTS RESERVED FOR
DINSAA SUIT. ALL RIGHTS RESERVED FOR
DINSAA SUIT. ALL RIGHTS RESERVED FOR



178204



DS-143

TOP:- VELVET WITH EMBROIDERY
BOTTOM/INER:- RAYON PASHMINA
DUPATTA:- NET WITH EMBROIDERY

WASHING INSTRUCTIONS
WASH IN COLD WATER
DO NOT BLEACH
DO NOT IRON
DO NOT DRY CLEAN
DO NOT TUMBLE DRY
DO NOT USE HARSH DETERGENTS
DO NOT USE BLEACH