

MARIA B

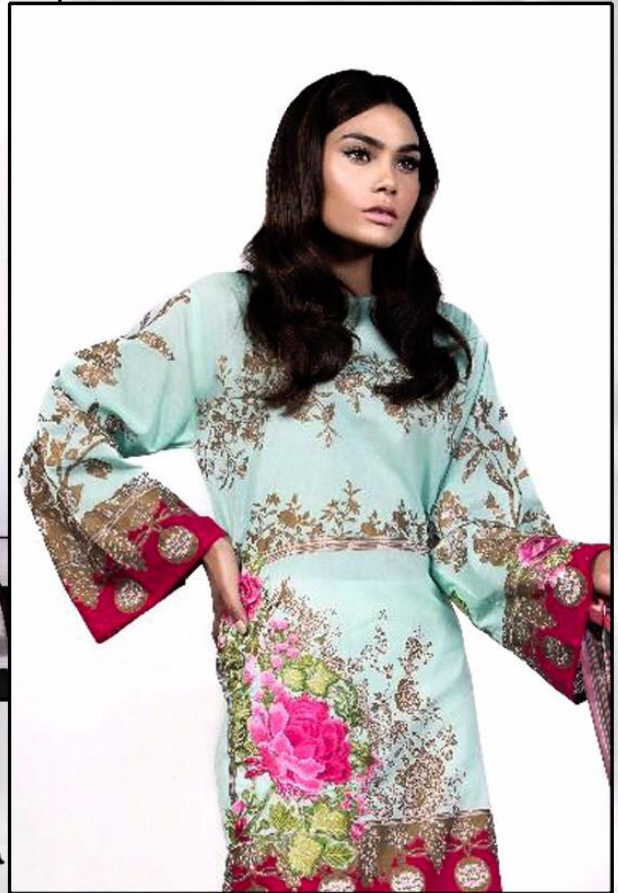
#12

Top: Cambric Cotton Print With Heavy Emroidery

Slieve: Printed

Bottam: Semi Loan With Embroidery patch

Dupatta: Siffon Printed



Care Instructions



- Dry clean recommended.
- do not use any type of bleach or stain removing chemicals.
- do not overexpose damp fabric to strong sunlight.
- iron at moderate temperature.

AL-SAFA

MARIA B

#12

Top: Cambric Cotton Print With Heavy Emroidery

Slieve: Printed

Bottam: Semi Loan With Embroidery patch

Dupatta: Siffon Printed



Care Instructions



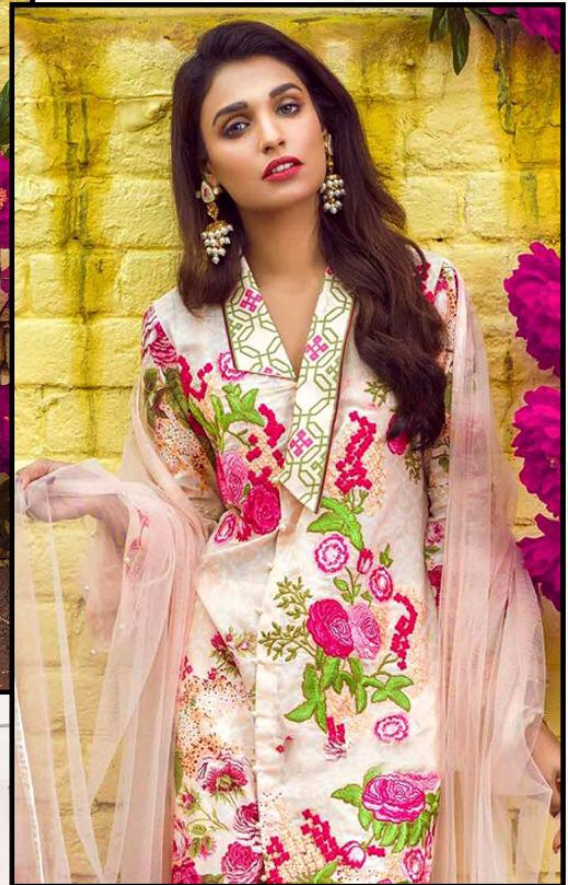
- Dry clean recommended.
- do not use any type of bleach or stain removing chemicals.
- do not overexpose damp fabric to strong sunlight.
- iron at moderate temperature.

AL-SAFA

MARIA B

#11

Top: Cambric Cotton Print With Heavy Emroidery patch
 Slieve: Printed
 Bottam: Semi Loan
 Dupatta: Net with Heavy Embroidery



Care Instructions



- Dry clean recommended.
- do not use any type of bleach or stain removing chemicals.
- do not overexpose damp fabric to strong sunlight.
- iron at moderate temperature.

AL-SAFA

12



11



AL-SAFA

MARIA B