



Always keep your eyes open. Keep watching. Because whatever you see can inspire you.



Naaz
-E-
Patiyala



I-338-007



Naaz
-E-
Patiyala

I-338-010



Naaz-E-Patiyala

Exclusive Patiyala Collection

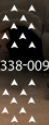


Design is a constant challenge to balance comfort
with luxe, the practical with the desirable.



Naaz
-E-
Patiyala

I-338-009





I-338-008

Design is a constant challenge to balance comfort with luxe, the practical with the desirable.



Naaz
-E-
Patiyala



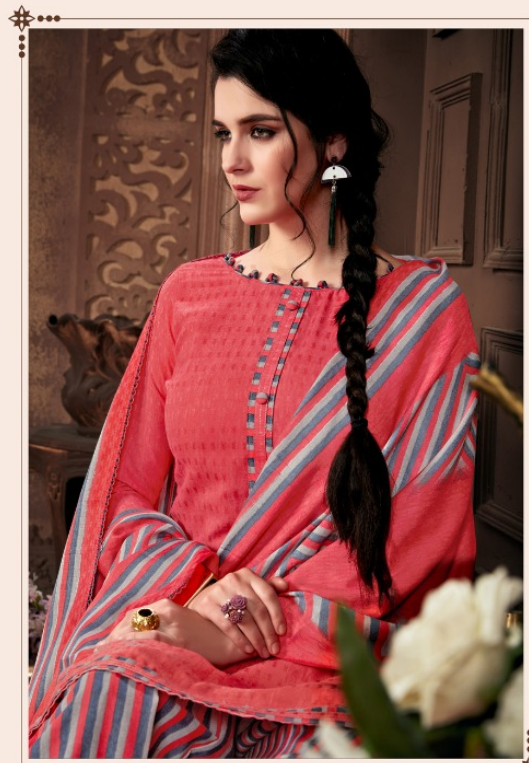
SUPERB

FU SI ON

OF CLASSIC &
CONTEMPORARY
DESIGNS



Naaz
-E-
Patiyala



I-338-006

It's all about timing. If it's too soon, no one understands. If it's too late, everyone's forgotten.



Always keep your eyes open. Keep watching.
Because whatever you see can inspire you.



Naaz
-E-
Patiyala

I-338-005



I-338-004

Elegance is the balance between proportion,
emotion and surprise.



Naaz
-E-
Patiyala





1-338-001



I-338-002

It's all about timing. If it's too soon, no one understands. If it's too late, everyone's forgotten.